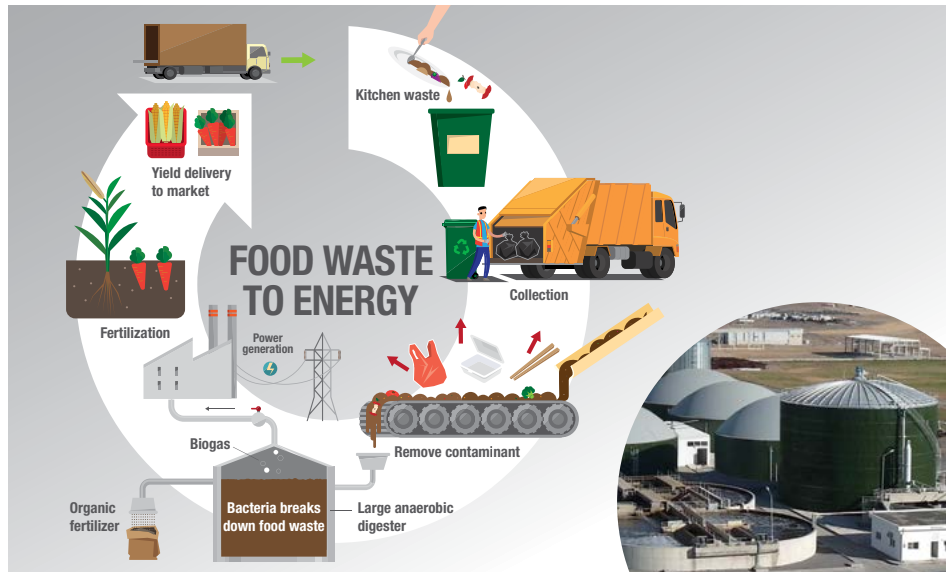
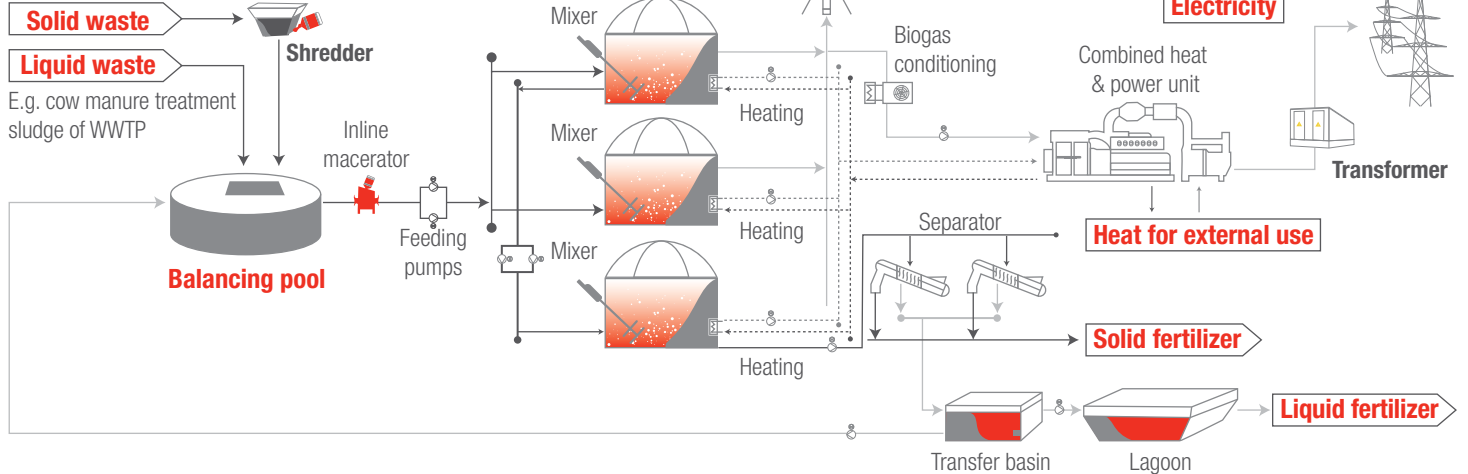


# WASTE TO ENERGY

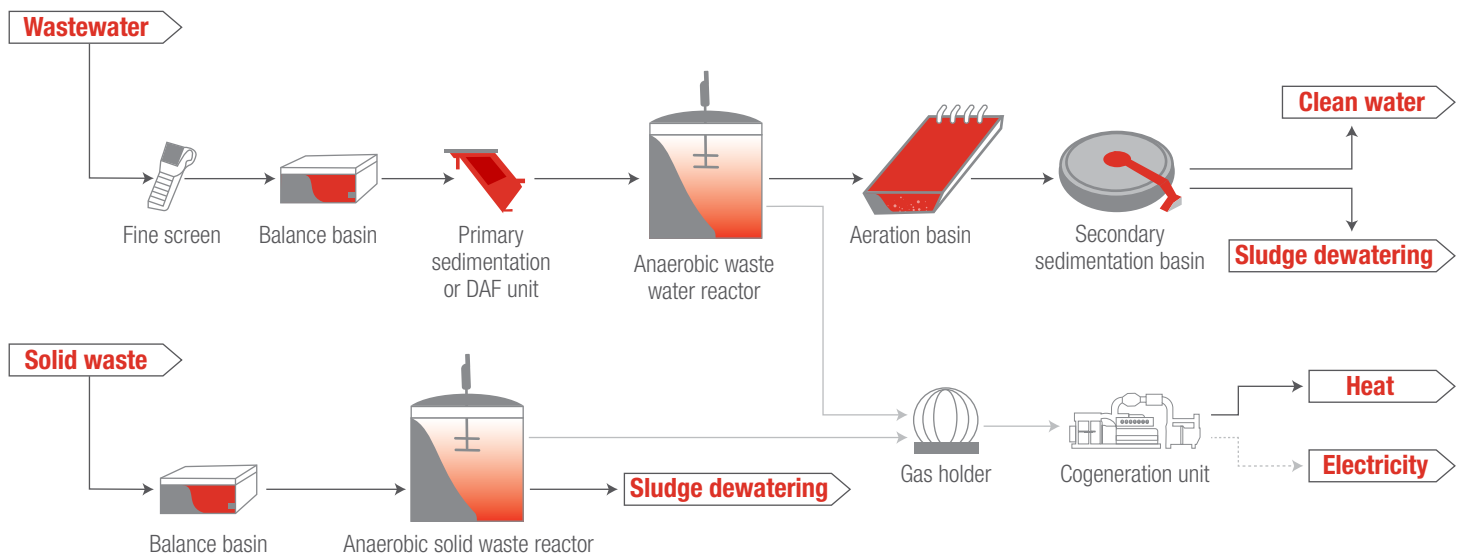


## Waste acceptance & balancing system

E.g. residues of beets, potatoes & slaughterhouse waste

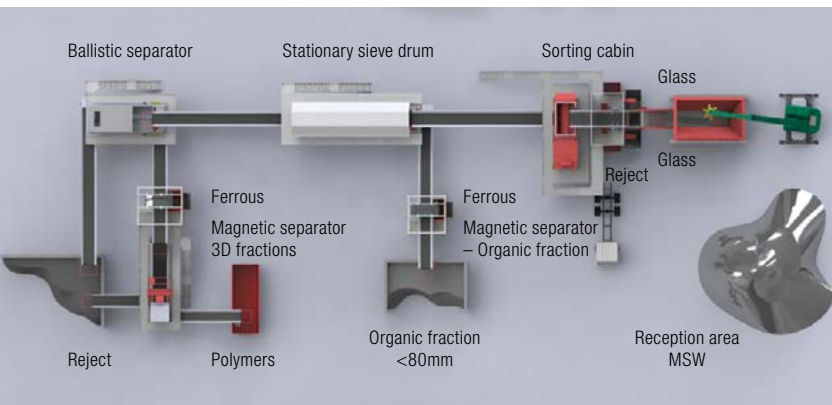


## Energy efficient integrated WWTP & organic solid waste management concept



## TYPICAL LAYOUT FOR MIXED SOLID WASTE

### Material recovery facility



Provided by BIANNA Recycling 

## SUPPLEMENTARY TECHNOLOGY

OPTIMIZING YOUR PRODUCTS TO THE DEMANDS OF THE MARKET

### Conditioning of the biogas

- Biological desulphurization & dewatering
- Biogas upgrading to CNG / LPG
- By product CO<sub>2</sub> & H<sub>2</sub> for the industry

### Different usage of biogas

- Heat → hot water or steam boiler
- Electricity & heat → combined power & heat gas engine, turbine

### Usage of heat

- Cooling with absorption chiller
- Thermal drying

### Fertilizer production from solid digestate

- Bio-drying of solid digestate
- Production of ammonia sulfate in combination with exhaust air & liquid digestate treatment

### Wide possibility of organic waste input streams

- De-packing of expired food waste
- De-stoning of chicken dung with automatic removal before anaerobic treatment
- Optimized waste storage



Renewable energy



Zero-waste



Convert waste to energy



Biogas



Green infrastructure

## INDUSTRIAL APPLICATIONS

### Soft & hard drink industry

- Highly COD polluted wastewater
- Residues of beverage production

### Dairies

- With whey polluted wastewater
- Agricultural residues from milk supplier, cow dung & straw

### Potato & corn chips production industry

- With starch polluted wastewater
- Residues of potatoes & corn from production

### Slaughterhouses

- With blood & fat polluted wastewater
- Residues of meat

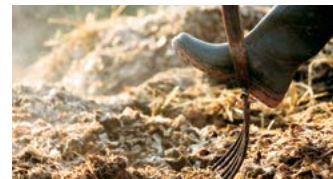
### Waste management industry

- Organic waste from MSW
- Food waste from restaurants & canteens
- Expired food (packed/unpacked)

### Vegetable & fruit industry

### Sugar & candy production industry

### Pulp & paper industry



## OUR SCOPE OF SERVICES

- Process flow analysis & feasibility study
- Basic & detailed engineering
- Machinery selection & installation
- Project & construction management
- Commissioning & training
- Service & maintenance

## CONTACT US TO LEARN MORE

Rieckermann Philippines, Inc.  
215 Jaime Cardinal Sin St. Cor. Dela Paz Pleasant Hills,  
Mandaluyong City Metro Manila 1550, Philippines

Ms. Louie Antonette Alfonso  
Mobile: +63 917 129 8022  
Phone: +63 (2) 8634-2623 - 26  
Email: l.alfonso@rieckermann.com

 Since  
**1892**