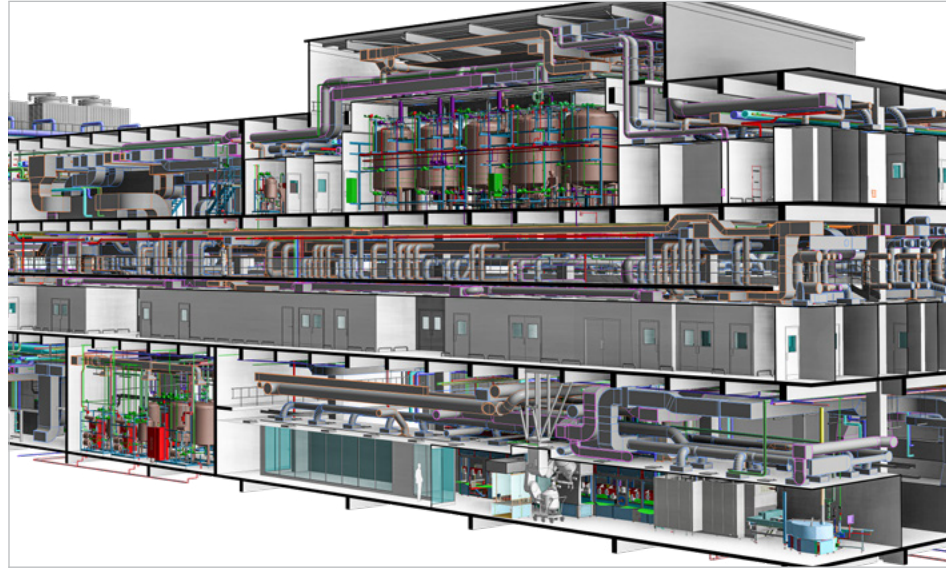


ENGINEERING & DESIGN



Qualified & experienced professionals

Rieckermann provides an exceptionally skilled team of architects and engineers to perfect your project, including process, mechanical, HVAC, electrical, automation, and validation specialists in the fields of pharmaceutical, life sciences, food processing, oil and gas, and environmental facilities.

Basic engineering

The basic design phase will advance the design across the various engineering disciplines, including process, architectural, structural and civil, utilities, HVAC, electrical, and fire. The major objective of this phase is ensuring all major building elements, equipment, and systems are defined and accounted for in the overall design, and that everything is laid out in an optimal fashion, maximizing operational efficiency and minimizing costs.

The basic design will provide an approved set of drawings and documents defining the basis of design for the facility, allowing the project to subsequently be fully engineered with changes mitigated. Capital investment costs will be further refined to provide more accurate project cost estimates.

Detailed engineering

Our detailed design package provides over 500 items – including all the drawings, specifications and documentation needed to progress the project into the implementation phase. As part of this engineering phase we produce a comprehensive package of technical information that will be used as a basis upon which to purchase, build, install, commission, validate and qualify your facilities and equipment.

Your benefits

- Comprehensive & compliant designs
- Proven track record based on experience
- Flexible in customization & planning

ENGINEERING | MACHINERY | SERVICES

360° customized industrial solutions

For all addresses and contact information of our local offices please visit our website: www.rieckermann.com. We will be pleased to be of assistance.

CONTACT US TO LEARN MORE

Mr. Jorge Domingo Guerra
Sales & Business Development Director, Engineering Operations
Phone: +603 7660 9239 | Email: j.domingo@rieckermann.com

Rieckermann (Malaysia) Sdn. Bhd. | Synertec Asia (Malaysia) Sdn. Bhd.
B2-9-01 & B2-9-02, Block B2, Meritus@Oasis Corporate Park
No. 2, Jalan PJU 1A/2, Ara Damansara, 47301 Petaling Jaya, Selangor D.E., Malaysia

